

Figure 4. Overview maps showing the location of the Howland Site in Rocky Nock, Kingston. Bottom right: Massachusetts; Left: Plymouth Bay; Upper right: The Howland property boundaries on the aerial photograph.

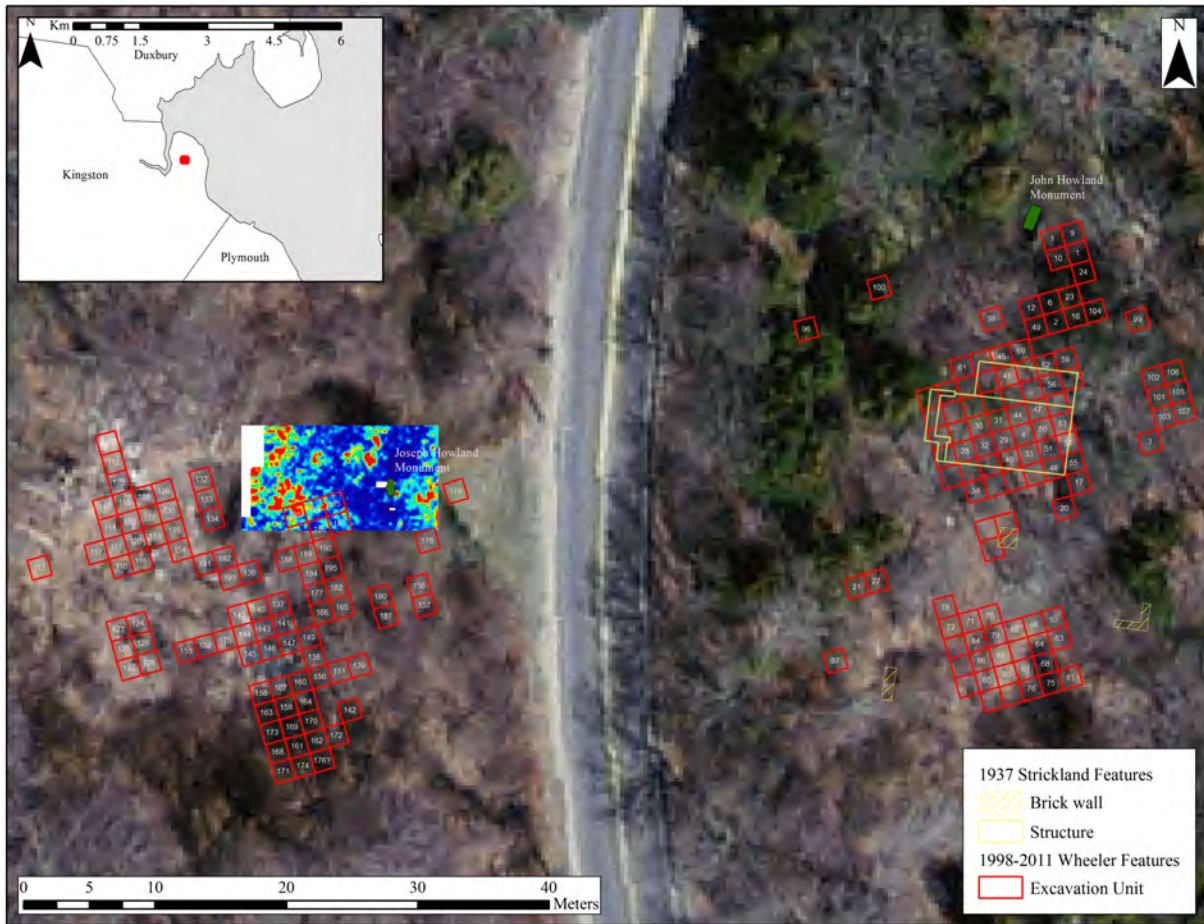


Figure 5. Howland Site composite archaeological excavation and survey map overlaid on the aerial photograph. The yellow outline shows Strickland’s excavations of the 1930s, the red outline the University of Virginia and Howland Society excavations of 1998–2011. The brightly colored area is geophysical remote sensing data collected as part of the reconnaissance survey. The excavation units shown on the left side of the road were searching for Deetz’s earlier excavations of the 1950s and 60s, which have not been accurately located.

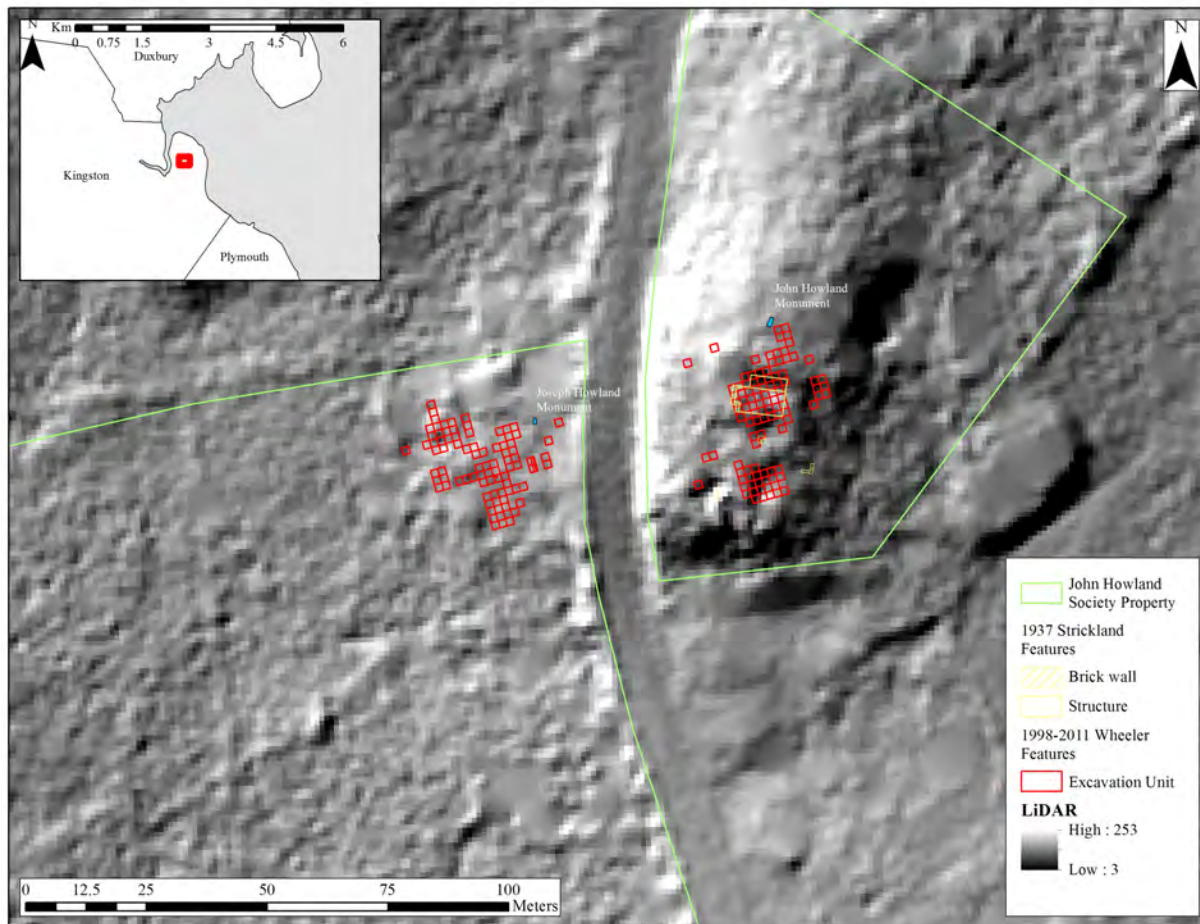


Figure 6. Howland Site and property, showing excavation units overlaid on LiDAR data. The LiDAR is shaded to show elevation changes at ground surface. The linear features running mostly east-west on the property to the left of the road are stone walls.



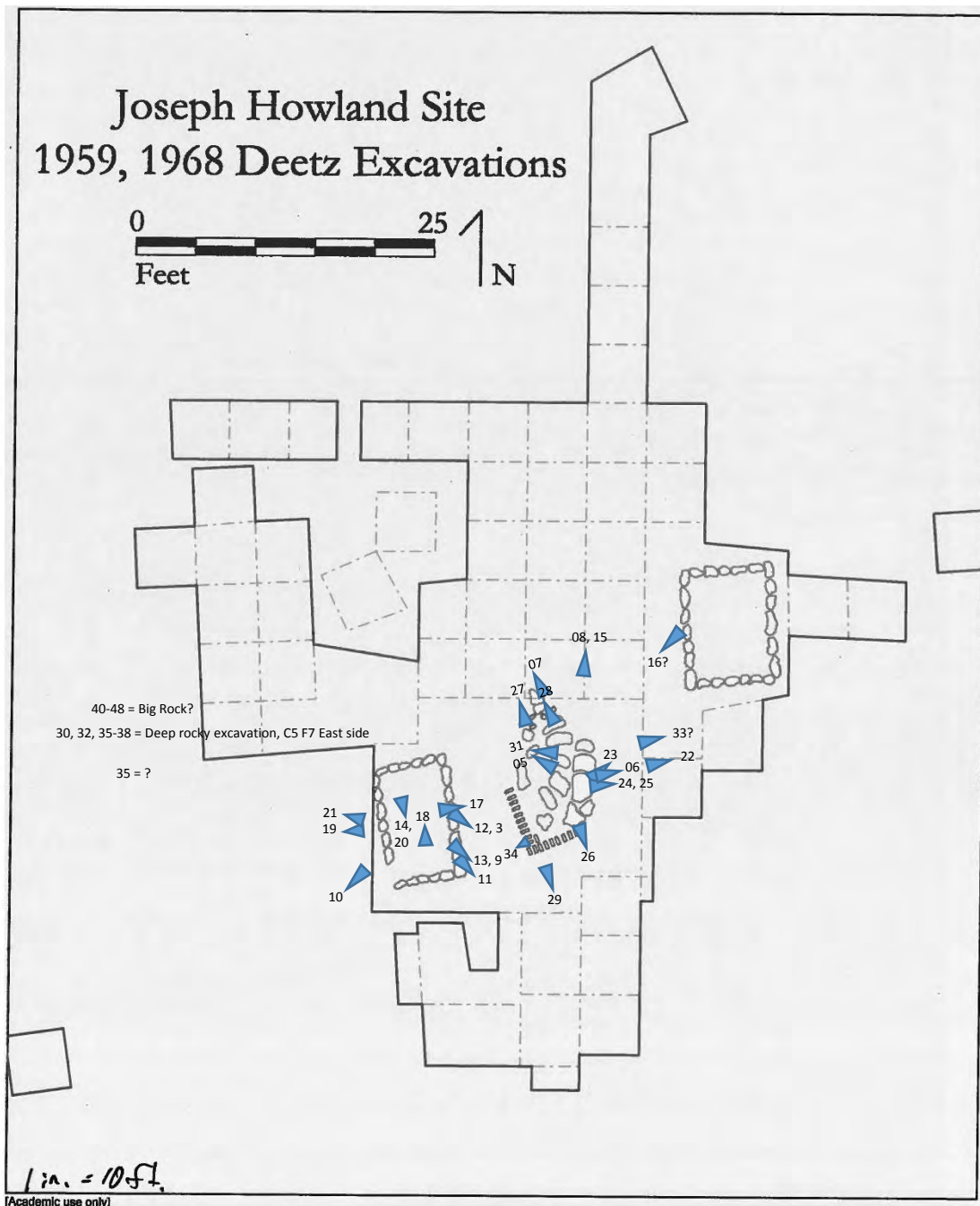


Figure 7. Image map showing the reconstructed location of Deetz's photographs of his 1960s excavations at the Joseph Howland Site. The point of the triangles between the long sides are where the picture was taken from, and the long sides point to the direction of the photo. Photo numbers match historic images.